

# ***Creating Profibus .ALERT files***

---



## ***What is an .ALERT file***

---

- A .ALERT file defines to AMS Device Manager which parameters or variables should be read from the device on a periodic basis to generate alerts.
- The alerts inform the user that the device has failed or has other issues that need maintenance attention from the user.
- Examples
  - Device has failed and needs replacing.
  - Device needs maintenance soon.
- Do not process / operation alerts.
  - Process temperature is high
  - Flow is low

# ***What is an .ALERT file***

- Data type supported
  - Bit enumerated, 1 to 4 bytes in length
  - Enumerated, 1 to 4 bytes in length
- Data constructs supported
  - Must be a supported data type
    - Replace the text in the <> with the information for the variable or parameter.
  - Simple variable
    - <Variable Name>
    - Example - Status
  - Record elements
    - <Record Name>.member.<Member Name>
    - Example - DeviceVariables.member.Staus
  - Array Elements
    - <Array>.element.<Element Index>
    - Example – StatusArray.element.3

## ***What to you need***

---

- A list of what variables and bits or values of those variables you want reported in the AMS Device Manager Alert Monitor
- The Alert file generation tool

# ***What to you need***

- Sample List of Variables

DD Variable / Parameter Name	Bit or Value	Type	Label	Description
Failure_Bits_1	1	Bit Enumerated	Device Failure	Device has failed, replace module B
Failure_Bits_1	2	Bit Enumerated	Device Failure	Device has failed, replace module C
Sensor_Status	12	Enumerated	Sensor Failure	Sensor has failed. Checked terminal 2 wiring
Sensor_Status	10	Enumerated	Sensor Failure	Sensor has failed. Checked terminal 1 wiring

# ***The ALERT file Tool***

- The tool is part of the AMS Device Manager Profibus toolkit.
- It needs to be installed on your machine.
  - It does not create a start menu item, you need to run it from the installed location. Create your own short cut is you like.
  - Default locations is;
    - \Program Files\AMS EDDL Alert Toolkit2\EDDLAlertUtil.exe



# ***The ALERT file Tool***

- File | New
- Enter the devices Manufacture ID, Device Type ID, Device Revision, and DD rev in Hex

AMS Device Manager - EDDL Alert Generator (For PROFIBUS only)

File View Window About

Device Information

Protocol  
PROFIBUS-DP

Manufacturer ID (Hex)  
000001

Device Type ID (in Hex)  
0001

Device Revision (in Hex)  
01

DD Revision (in Hex)  
1

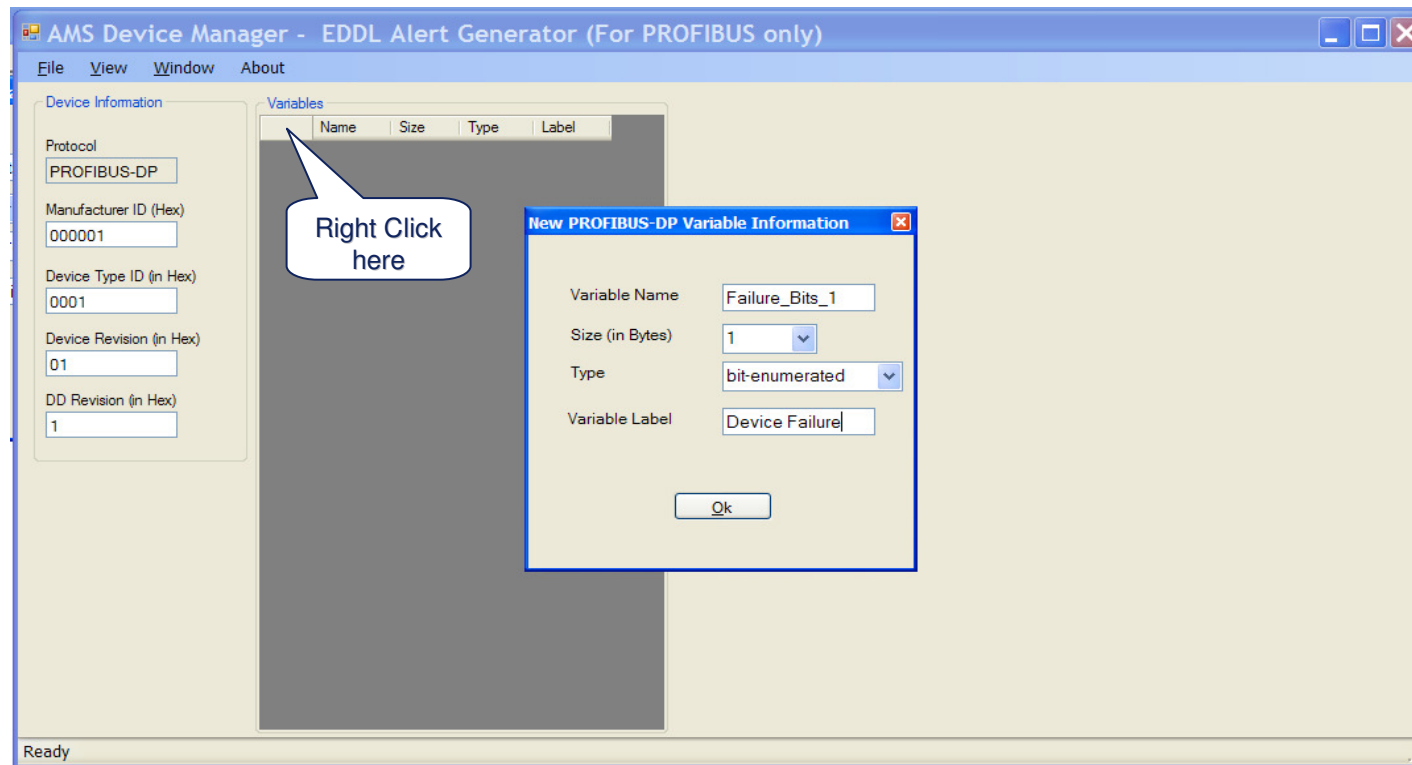
Variables

Name	Size	Type	Label
------	------	------	-------

Ready

# ***The ALERT file Tool***

- Add Variables
- Right Click and add variable
- Enter variable information and click OK





# The ALERT file Tool

- Select the bits used.
- Fill in the Alarm String displayed to user
- Fill in the DD Help and Extended Help, both are optional

AMS Device Manager - EDDL Alert Generator (For PROFIBUS only)

File View Window About

Device Information

Protocol: PROFIBUS-DP

Manufacturer ID (Hex): 000001

Device Type ID (in Hex): 0001

Device Revision (in Hex): 01

DD Revision (in Hex): 1

Variables

Name	Size	Type	Label
Failure_Bits_1	1	bit-enumerated	Device Failure

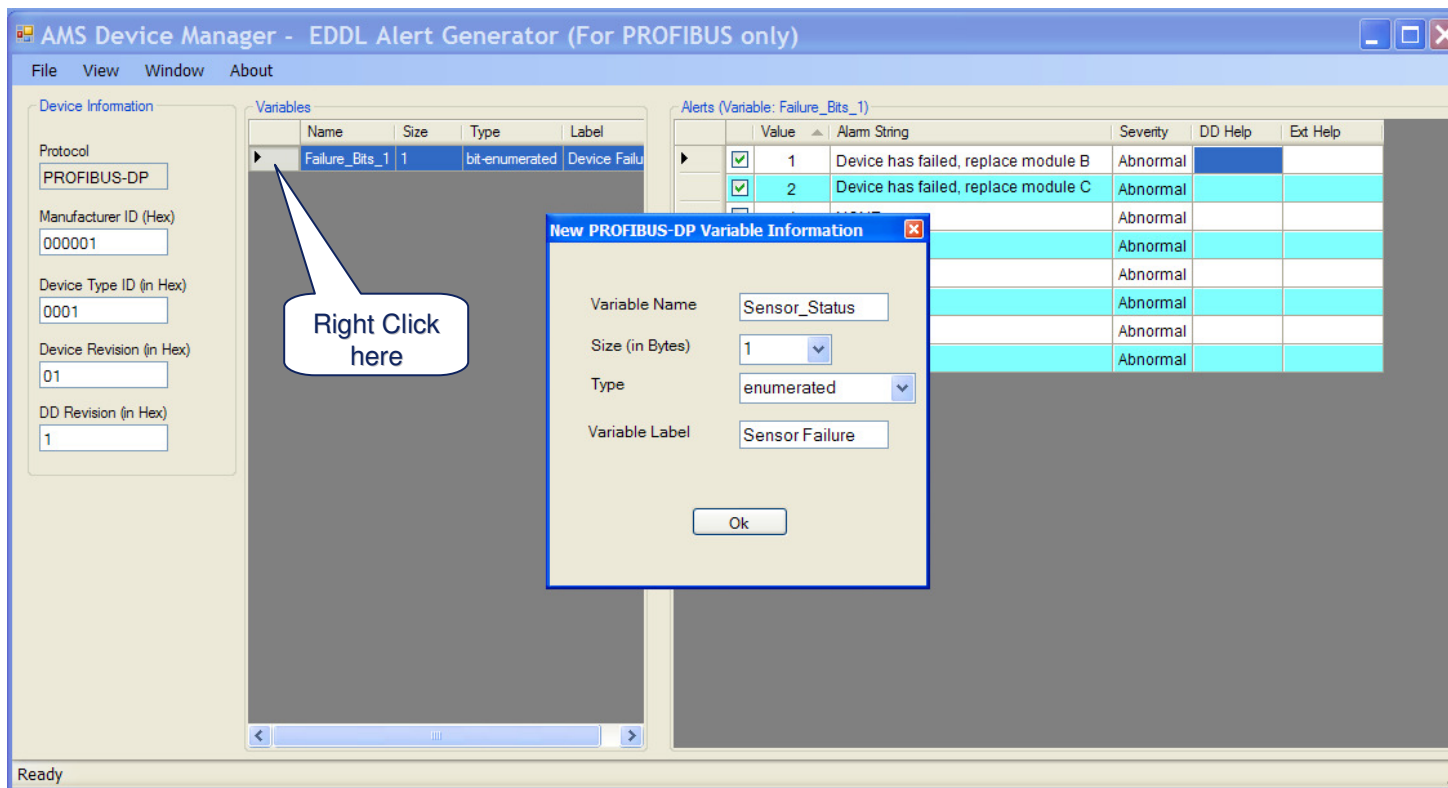
Alerts (Variable: Failure\_Bits\_1)

Value	Alarm String	Severity	DD Help	Ext Help
<input checked="" type="checkbox"/> 1	Device has failed, replace module B	Abnormal		
<input checked="" type="checkbox"/> 2	Device has failed, replace module C	Abnormal		
<input type="checkbox"/> 4	NONE	Abnormal		
<input type="checkbox"/> 8	NONE	Abnormal		
<input type="checkbox"/> 16	NONE	Abnormal		
<input type="checkbox"/> 32	NONE	Abnormal		
<input type="checkbox"/> 64	NONE	Abnormal		
<input type="checkbox"/> 128	NONE	Abnormal		

Ready

# The ALERT file Tool

- Right Click and add next variable
- Enter variable information and click OK



# The ALERT file Tool

- Select the bits being used, uncheck the unused bits.
- Fill in the Alarm String
- Fill in the DD Help and Extended Help, both are optional

AMS Device Manager - EDDL Alert Generator (For PROFIBUS only)

File View Window About

Device Information

Protocol: PROFIBUS-DP

Manufacturer ID (Hex): 000001

Device Type ID (in Hex): 0001

Device Revision (in Hex): 01

DD Revision (in Hex): 1

Variables

Name	Size	Type	Label
Failure_Bits_1	1	bit-enumerated	Device Failu
Sensor_Status	1	enumerated	Sensor Failu

Alerts (Variable: Sensor\_Status)

Value	Alarm String	Severity	DD Help	Ext Help
10	Sensor has failed. Checked terminal 1 wiring	Abnormal		
12	Sensor has failed. Checked terminal 2 wiring	Abnormal		

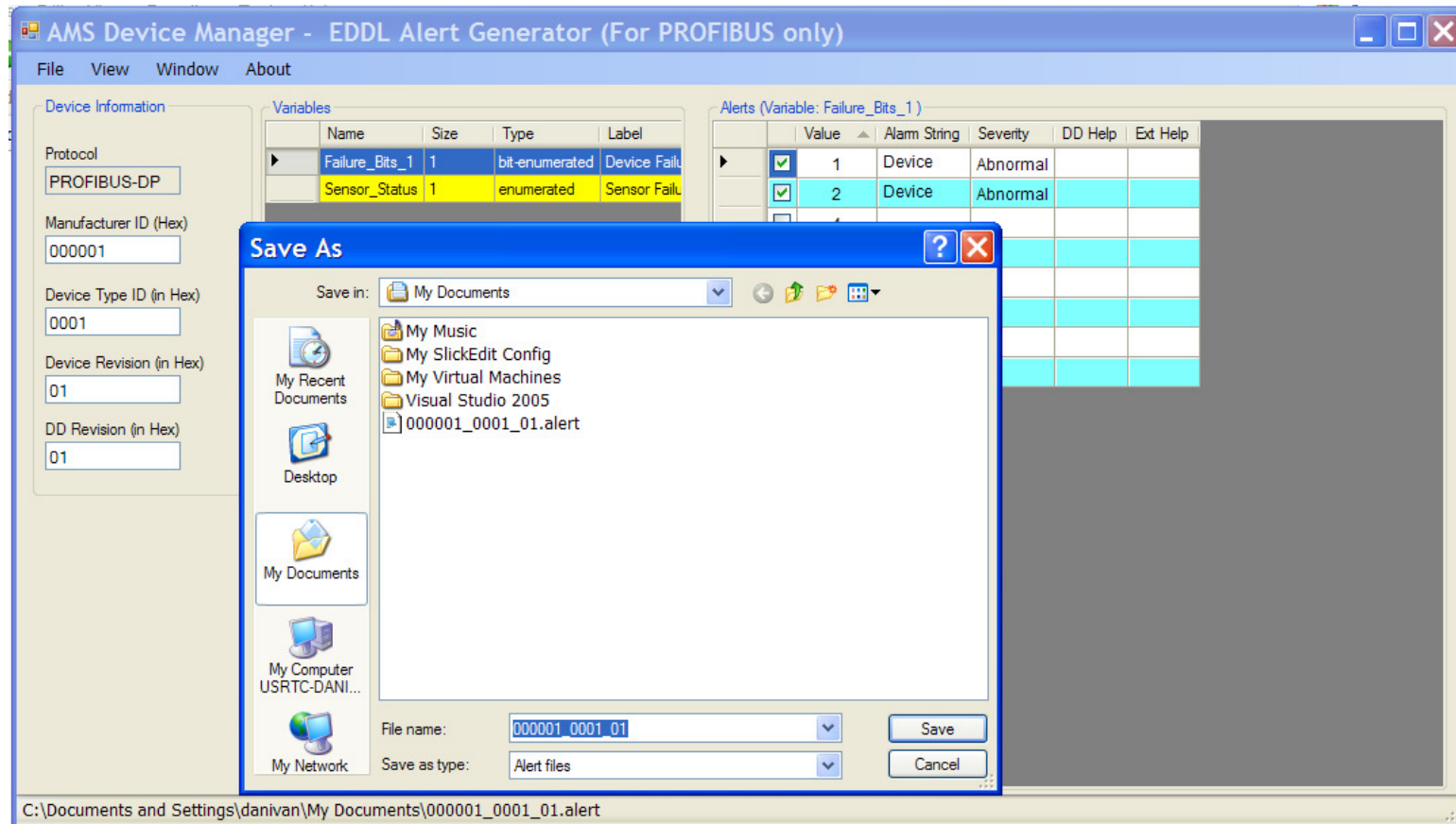
Add Alert

Delete Alert

Ready

# The ALERT file Tool

- Save the file.



## ***Add the File to Your Device Installation Kit***

---

- Copy the file to your install kit
- Update your DDInstal.ini file to include the .ALERT file.
- ALERT=000001\_0001\_01.alert